

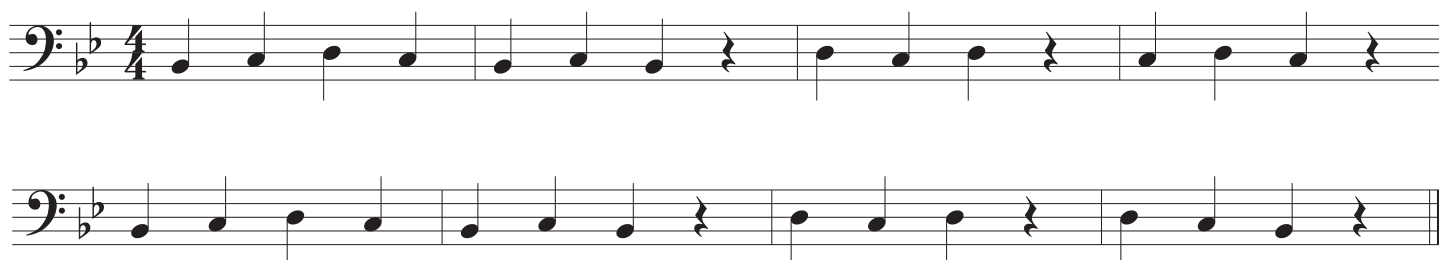
# Euphonium

## Habits Resources- Three Note Songs - Page 1

### 1. Shoheen Sho



### 2. Nala Kitty



### 3. Take Two



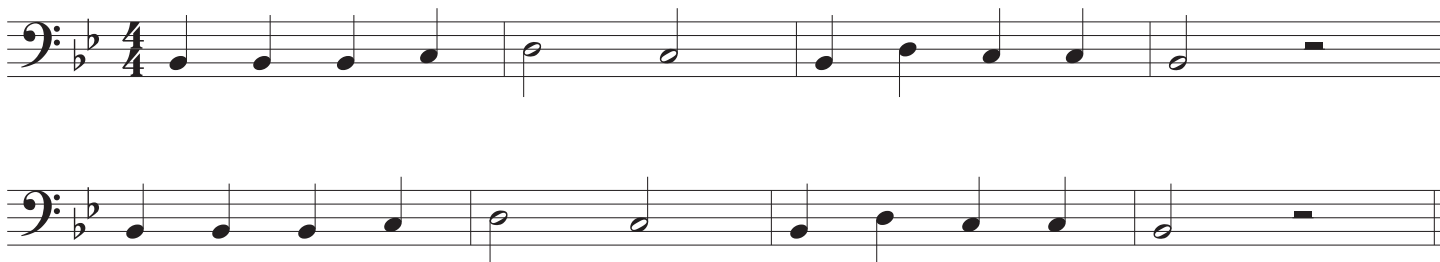
### 4. Down by the Station



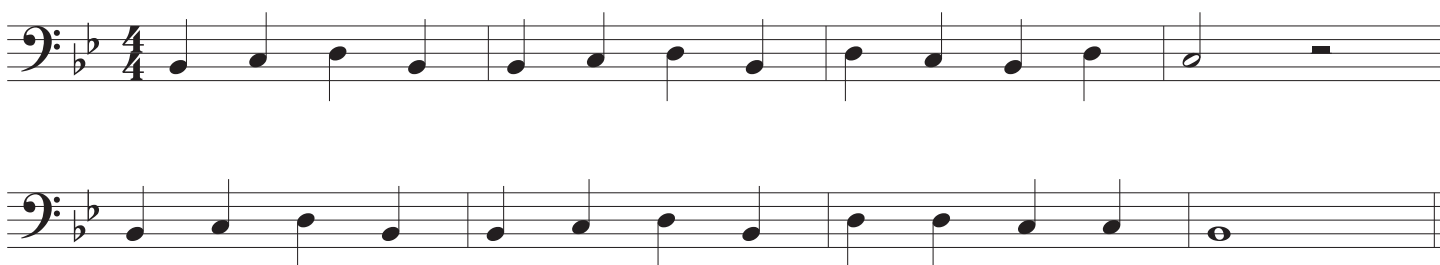
# Euphonium

## Habits Resources - Three Note Songs - Page 2

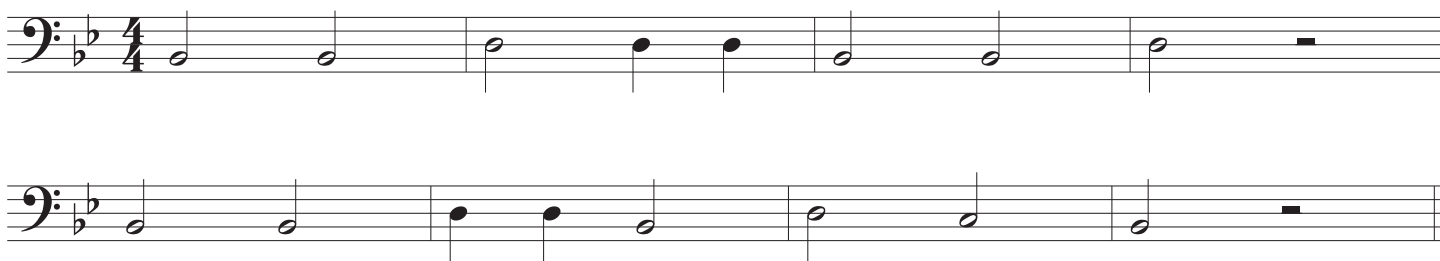
### 5. Low Pierrot



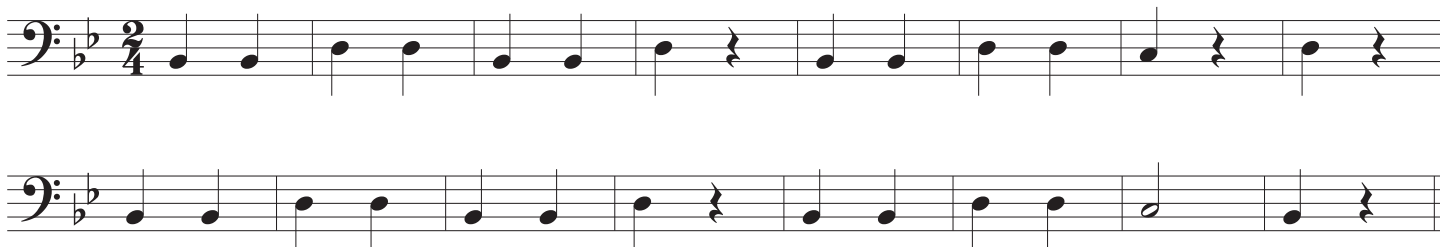
### 6. Listen to the Rain



### 7. Curious Thing



### 8. Lost Key



9. Moon and Stars

Two staves of music for 'Moon and Stars'. The first staff contains four measures: a half note G2, a half note A2, a half note B2, and a half note C3. The second staff contains four measures: a half note D3, a half note E3, a half note F3, and a half note G3. The key signature has one flat (Bb) and the time signature is 3/4.

10. Come Dreaming

Two staves of music for 'Come Dreaming'. The first staff contains four measures: a half note G2, a half note A2, a half note B2, and a half note C3. The second staff contains four measures: a half note D3, a half note E3, a half note F3, and a half note G3. The key signature has one flat (Bb) and the time signature is 3/4.

11. There She Goes

Two staves of music for 'There She Goes'. The first staff contains four measures: a half note G2, a half note A2, a half note B2, and a half note C3. The second staff contains four measures: a half note D3, a half note E3, a half note F3, and a half note G3. The key signature has one flat (Bb) and the time signature is 3/4.

12. Pierrot's Waltz

Two staves of music for 'Pierrot's Waltz'. The first staff contains four measures: a half note G2, a half note A2, a half note B2, and a half note C3. The second staff contains four measures: a half note D3, a half note E3, a half note F3, and a half note G3. The key signature has one flat (Bb) and the time signature is 3/4.